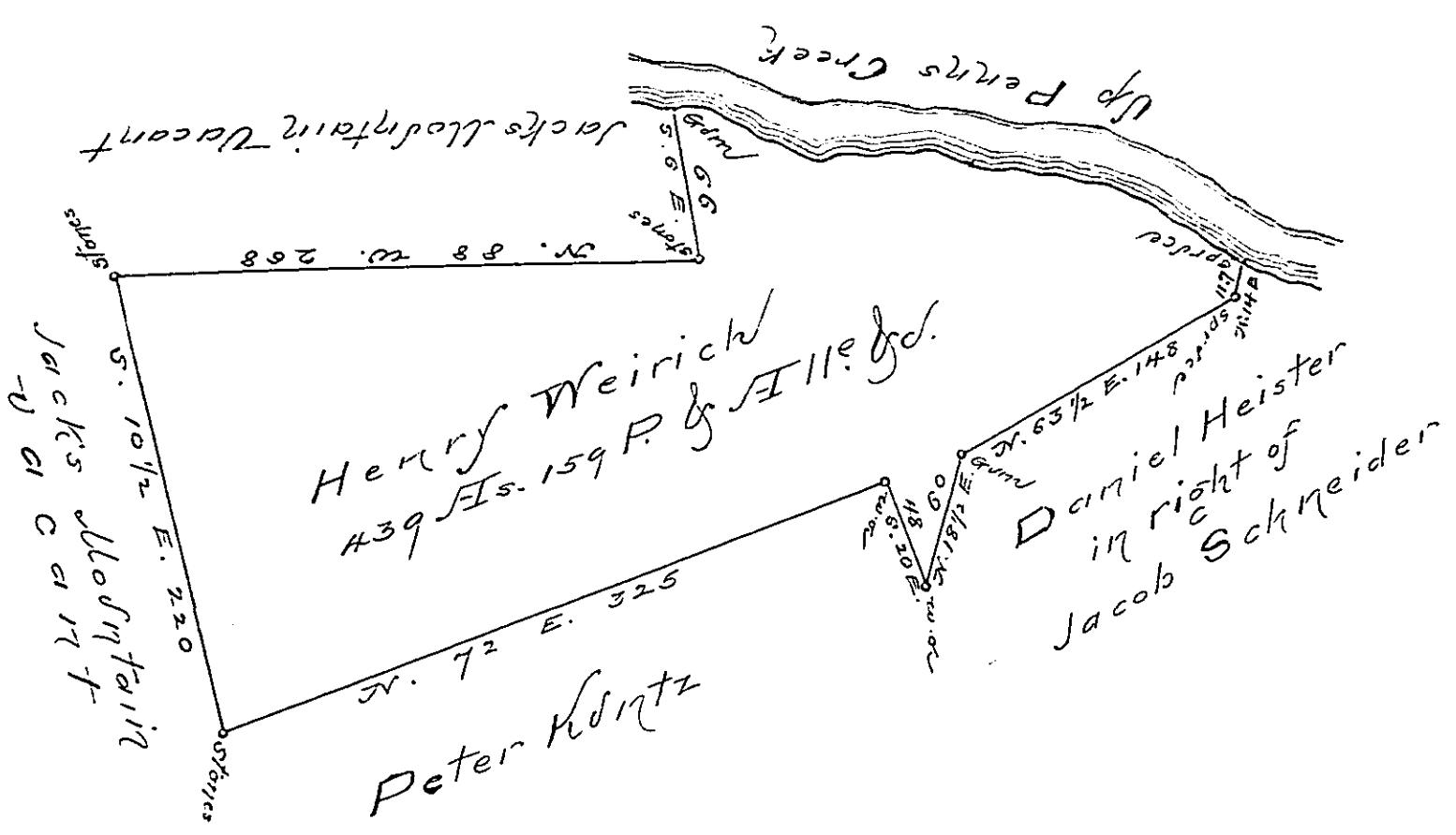


Courses up Penns Creek

N. 55	W. 40
N. 59	W. 40
N. 80	W. 74
N. 87	W. 66
N. 60	W. 42
N. 51	W. 17



The Draught of a tract of land called
 Situate in Leutz township, Union County containing Four
 hundred and thirty nine Acres and one hundred and fifty nine
 perches and the usual Allowance of six Per Cent for roads &c.

Surveyed the twenty first day of October Anno Domini
 One thousand eight hundred and thirtynine in Pursuance
 of a Warrant granted to Henry Weirich bearing date
 the fourth day of October Anno Domini One thousand
 eight hundred and thirtynine.

To Andrew Porter Esquire }
 Surveyor General of Pennsylvania } Simon Snyder Junr. D.S.

N.B. There is a One Storey house on the above de-
 scribed tract of land Sixteen feet by Eighteen
 about half an Acre of Clear land, and the
 applicant living thereon.

Simon Snyder Junr. D.S.

IN TESTIMONY that the above is a copy of the original remaining on file in the
 Department of Internal Affairs of Pennsylvania, made con-
 formably to an Act of Assembly approved the 16th day of
 February, 1833, I have hereunto set my Hand and caused
 the Seal of said Department to be affixed at Harrisburg, this

the 11th day of August 1896.

James W. Latta
 Secretary of Internal Affairs.